

# BED: A Real-Time Object Detection System for Edge Devices

Guanchu Wang\*, Zaid Pervaiz Bhat\*, Zhimeng Jiang\*, Yi-Wei Chen\*, Daochen Zha\*,  
Alfredo Costilla Reyes\*, Afshin Niktash, Gorkem Ulkar, Erman Okman, Xuanting Cai, Xia Hu

Rice University

Texas A&M University

Maxim Integrated

Meta Platforms, Inc.



RICE



maxim  
integrated™





- What's the advantage of BED?
- Pipeline of BED.
- Object detection using the GUI.
- Real-time object detection.



**What is BED?**

**What's the advantage of BED?**



**BED** is an **integrated** system for **real-time** object detection on edge devices

- Lightens DNN training with lower bit-width
- Faster on-chip DNN inference with lower memory consumption
- Supports customized or camera-capturing input images



# Pipeline of BED

## An efficient DNN accelerator

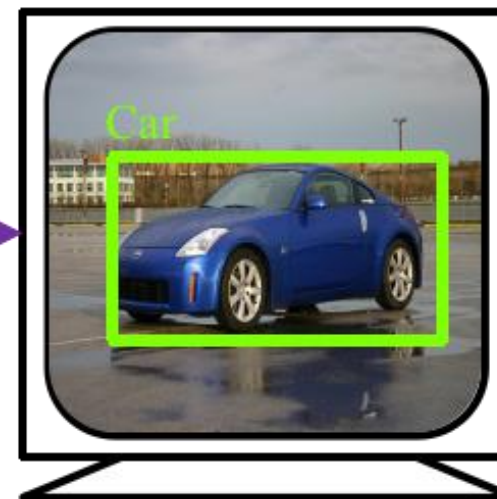
Input: Camera



MAX78000



Output: Screen

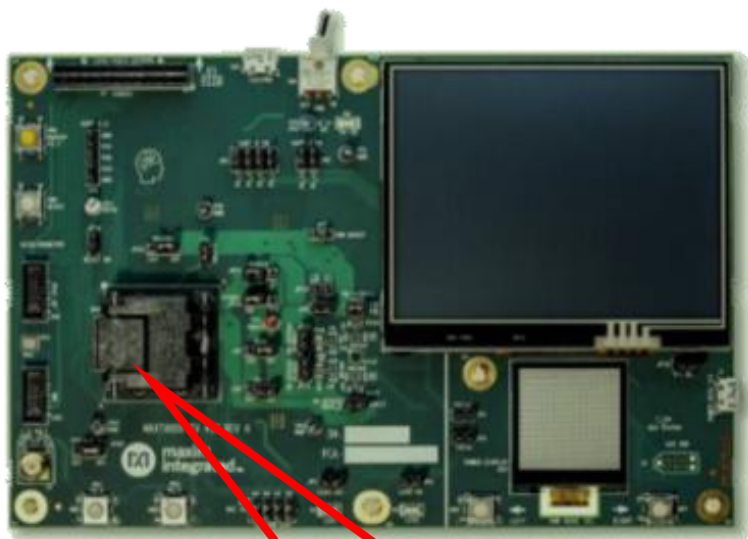




Input: Camera



MAX78000



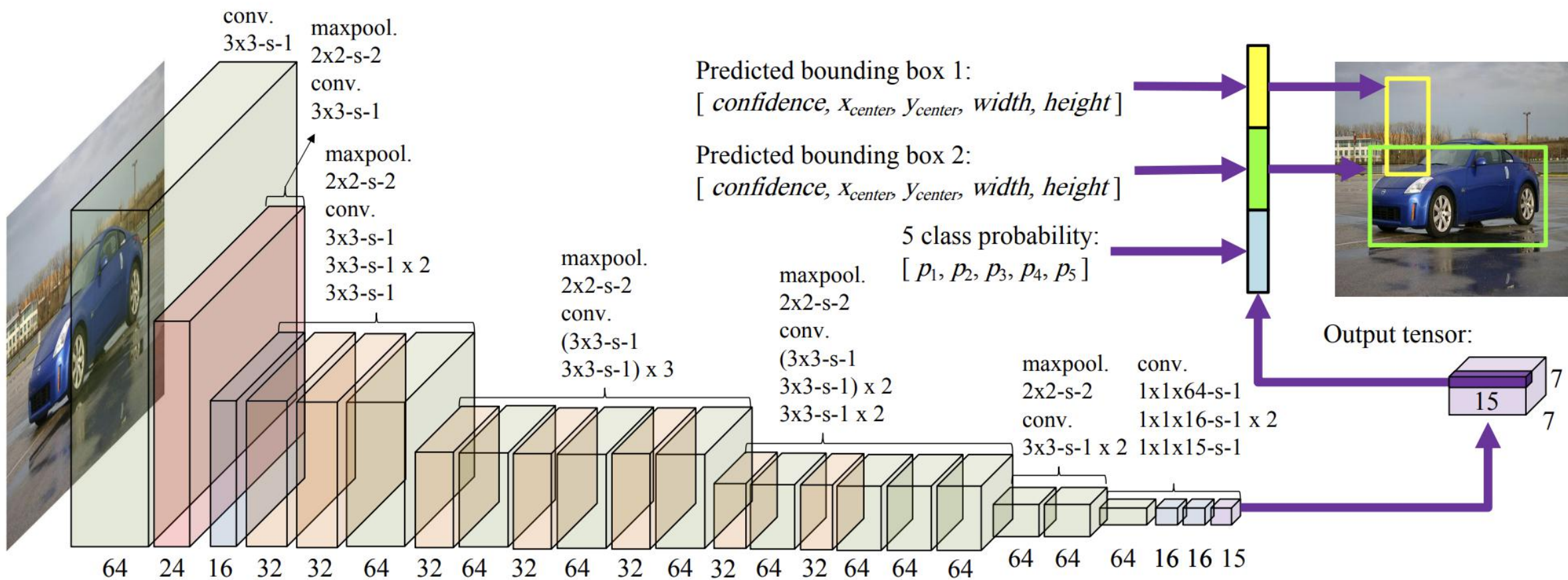
Output: Screen



Deploy a well-trained DNN model



# DNN architecture







## Latency of BED

Processing	Memory	Power	Inference time	Energy
Image load and DNN inference	299.52KB	20.08mW	91.9ms	1.845mJ

GoogleNet: 50MB

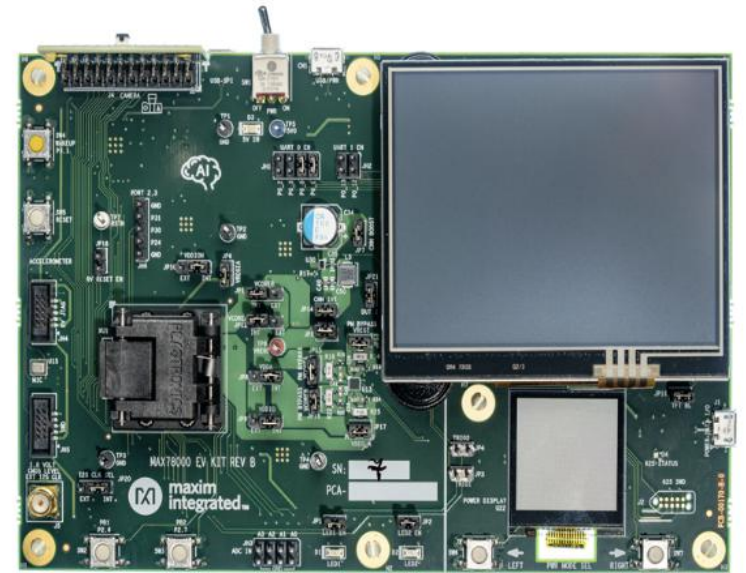
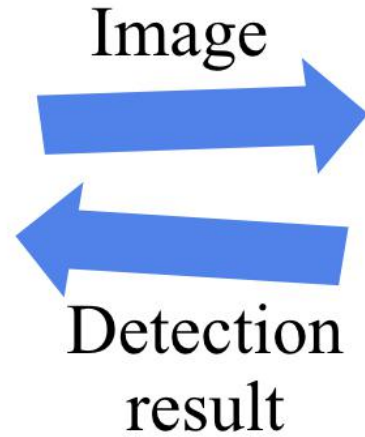
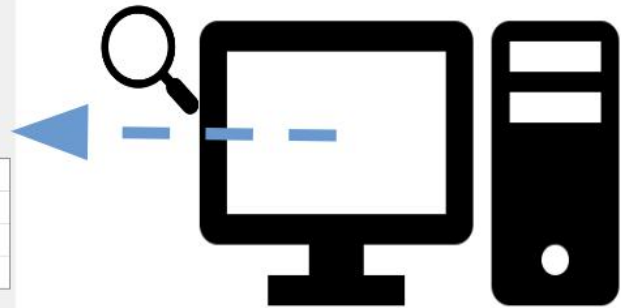
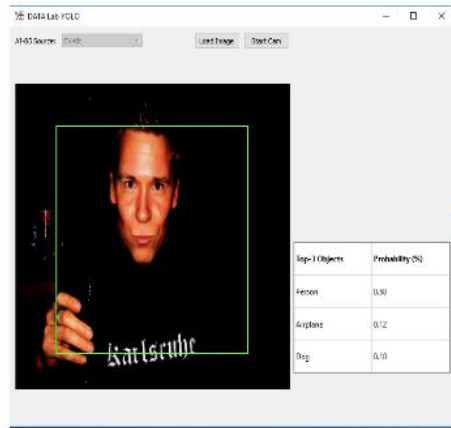
167 ×



**How to use BED for object detection?**



# Use BED GUI for object detection



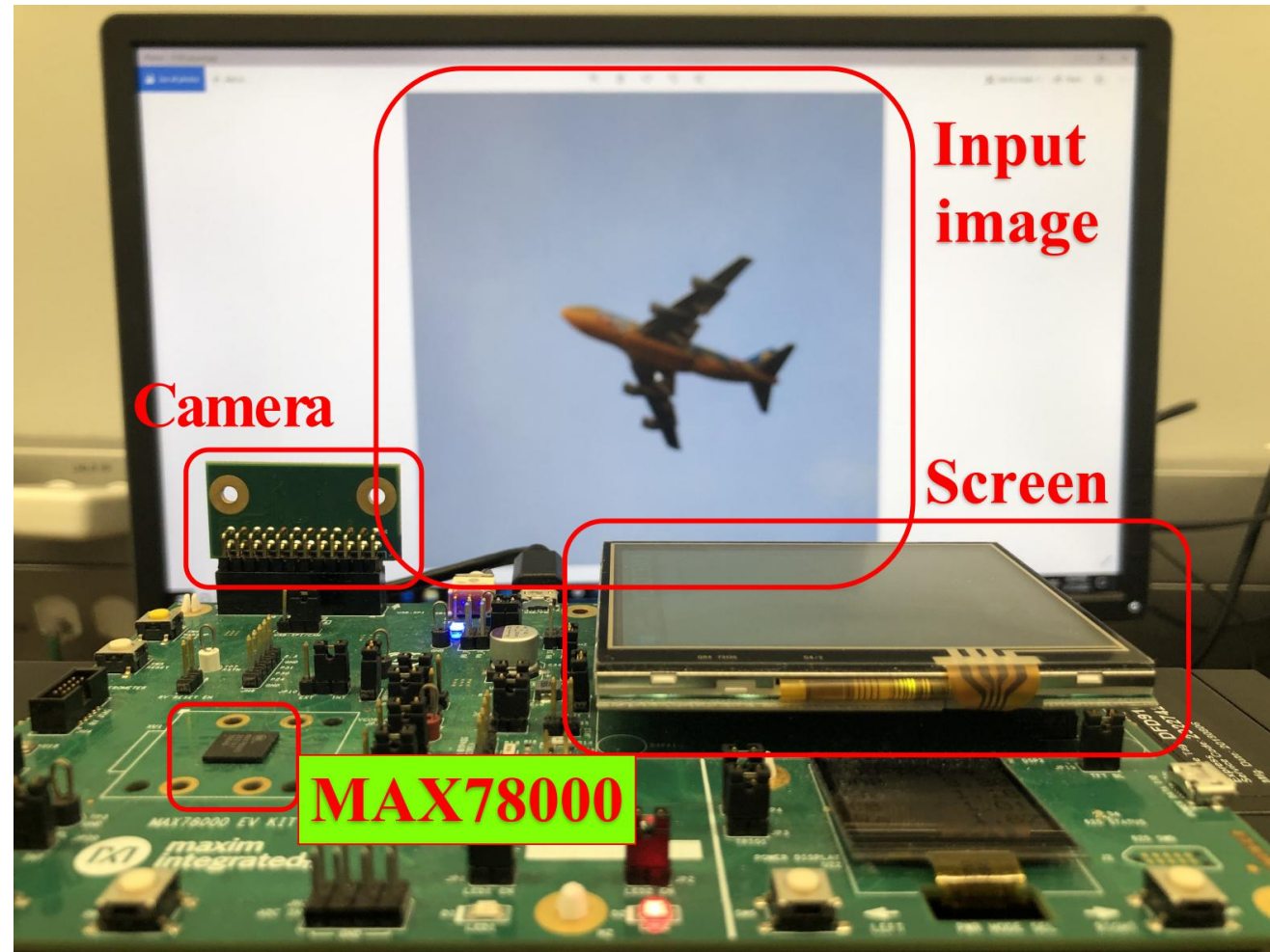
[Video](#)



# **Demonstration of BED for real-time object detection**



# Pipeline of real-time object detection



Video



## Other Resource

- Github Repo: [https://github.com/datamllab/BED\\_main](https://github.com/datamllab/BED_main)
- Demo Paper: <https://arxiv.org/pdf/2202.07503.pdf>
- Youtube:  
[https://www.youtube.com/watch?v=0tY31\\_cECCA&feature=youtu.be](https://www.youtube.com/watch?v=0tY31_cECCA&feature=youtu.be)



**Thank You**